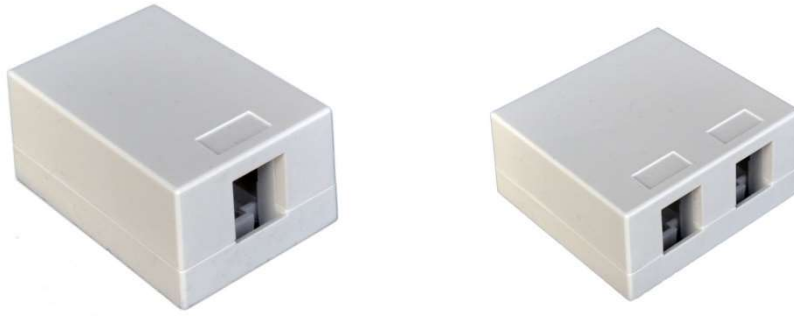


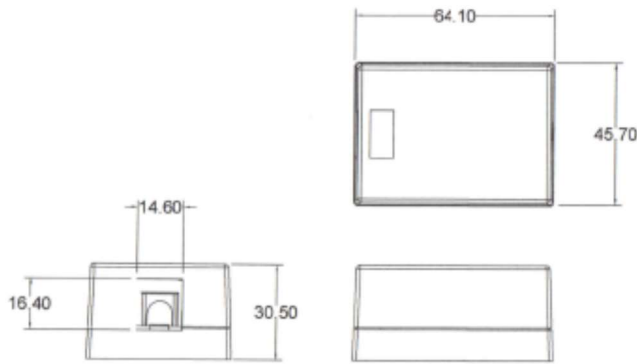
# Corning ONE™ SDN LAN

Surface Mount Boxes |

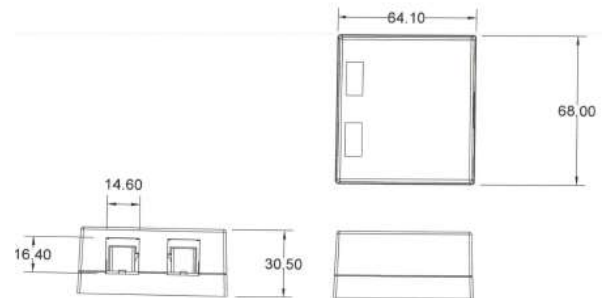
CORNING



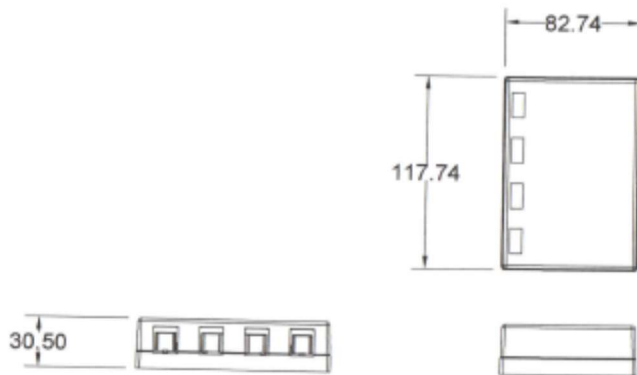
P/N	Short Description
1LAN-D600-SB1A-WH	Surface Mount Box for Keystones, 1-Port
1LAN-D600-SB2A-WH	Surface Mount Box for Keystones, 2-Port
1LAN-D600-SBFJ2-WH	Surface Mount Box for Keystones, 2-Port (EXTENDED)
1LAN-D600-SB4A-WH	Surface Mount Box for Keystones, 4-Port
1LAN-D600-SB6A-WH	Surface Mount Box for Keystones, 6-Port



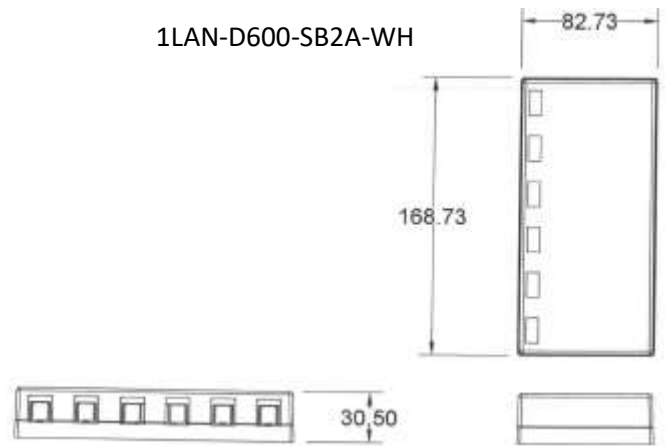
1LAN -D600-SB1A-WH



1LAN-D600-SB2A-WH



1LAN-D600-SB4A-WH

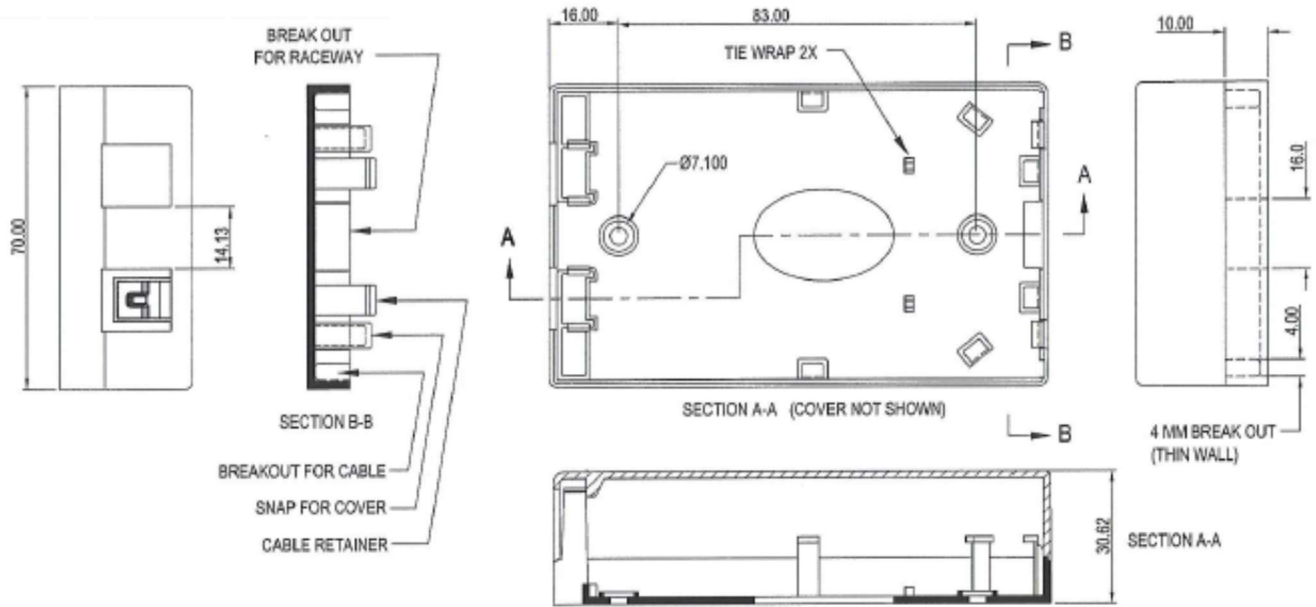


1LAN-D600-SB6A-WH

# Corning ONE™ SDN LAN

CORNING

1LAN-D600-SBFJ2-WH



# Corning ONE™ SDN LAN

Blank Patch Panels |



1LAN-D920CC-6



DE2-CCA-1PR18-2M

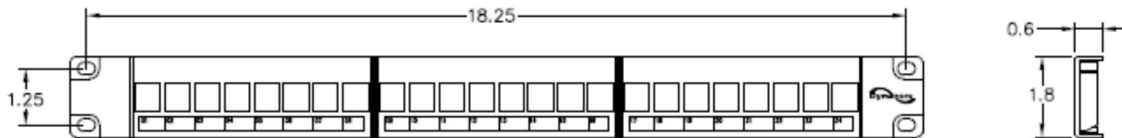
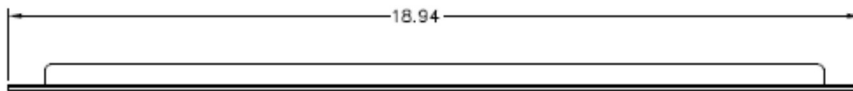


DE2-CCA-2PR18-2M



1LAN-D2013-24FP

P/N	Short Description
1LAN-D2013-24FP	Blank P-Panel 24 port plastic
1LAN-D2013-24HD	Blank P-Panel 24 port metal
1LAN-D920CC-6	Keystone CCH Panel
DE2-CCA-1PR18-2M	1-pr "Single" Cross Connect Assembly w/PHX Connectors, 18AWG, 2m
DE2-CCA-2PR18-2M	2-pr "Dual/Y" Cross Connect Assembly w/PHX Connectors, 18AWG, 2m



# Corning ONE™ SDN LAN

Keystone Adapters |



CORNING

P/N	Short Description
1LAN-D606K-BL	CAT6 Keystone Adapter, Blue
1LAN-D606K-RD	CAT6 Keystone Adapter, Red
1LAN-D600-SPK-WH	Power keystone adapter
1LAN-D600-CCP2-WH	Power keystone adapter (connector style)
1LAN-D17159-C6-WH	Cat6 Data Coupler (BK, WH)
1LAN-DCCS-6C	SC/APC Keystone Adapter
1LAN-DCCS-B3	LC/APC Keystone Adapter
1LAN-D600-BLA-WH	Blank Insert Module, Solid (100-ct.) 1 Bag
1LAN-D600-SCJ-GN	SC/APC Keystone Adapter, Shuttered
1LAN-D3190-KT	CAT6 Termination Tool

# Corning ONE™ SDN LAN

Patch Cables |

CORNING

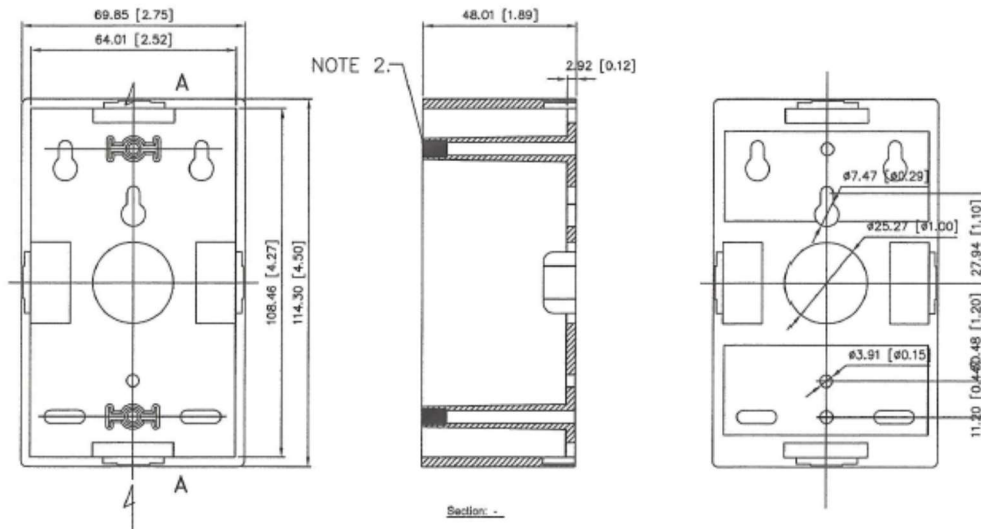


P/N	Short Description
1LAN-D600E03-BL	CAT6 Patch Cable, 3ft
1LAN-D600E05-BL	CAT6 Patch Cable, 5ft
1LAN-D600E07-BL	CAT6 Patch Cable, 7ft
1LAN-D600E10-BL	CAT6 Patch Cable, 10ft
1LAN-D600E14-BL	CAT6 Patch Cable, 14ft
1LAN-D600E25-BL	CAT6 Patch Cable, 25ft
1LAN-D600E50-BL	CAT6 Patch Cable, 50ft

Biscuit Box |



P/N	Short Description
1LAN-D630DGMB-WH	Mounting Box, Dual-Gang, 1-7/8"
1LAN-D630MBD-WH	Mounting Box, Single-Gang, 1-7/8"



# Corning ONE™ SDN LAN

Rack Based Shelves |

CORNING



P/N	Short Description
1LAN-D1900-CS	14" Single-Sided Shelf, Solid
1LAN-D1900-CSV	14" Single-Sided Shelf, Vented
1LAN-D1900-DSS	20" Double-Sided Shelf, Solid
1LAN-D1900-DSSV	20" Double-Sided Shelf, Vented